

Client: EQT
Well Name: 511458A Sidetrack
Field: Marcellus

Location: Lewis Co	Company Representative
Country: USA	Chris Twidt
Prov/State: WV	
County: Lewis, Co	
Drilling Rig #: Patterson 738	Geologist
Latitude: 38° 54' 39.839 N	Kevin Wolfe
Longitude: 80° 24' 15.732 W	
UWI/API: 47-410-5649	
License/Permit#:	Directional Drillers
Job No: 1030698 Sidetrack	Nate Parker
Vertical Section Direction: 321.97	Ryan Lewis
KB: 1532	
DF: 1522	
GL: 1510	
Permanent Datum: Mean Sea Level	MWD Operator
Drilling Measurement From: Drill Floor	Mike Perry
Magnetic Declination: -8.51	Greg Pamula
Mag Field: .525	Madisen Nnaoji
Dip Angle: 66.80	
Spud Date: -	
Print Date: 12/12/2010	
Log Start Depth: 5290	Leg Name
Log End Depth: 11100	Main Leg

Comments:
 -

PHOENIX TECHNOLOGY SERVICES LP ("PHOENIX") DOES NOT MAKE AND EXPRESSLY DISCLAIMS ALL WARRANTIES, REPRESENTATIONS AND CONDITIONS, WITH RESPECT TO THE INFORMATION CONTAINED IN THIS DOCUMENT, WHETHER ORAL OR WRITTEN, EXPRESS OR IMPLIED OR ARISING FROM CONTRACT OR STATUTE INCLUDING, WITHOUT LIMITATION, THE IMPLIED WARRANTIES OF MERCHANTABILITY, ACCURACY AND FITNESS FOR A PARTICULAR PURPOSE. ANYONE USING THIS INFORMATION DOES SO AT THEIR OWN RISK AND ACKNOWLEDGES AND AGREES THAT PHOENIX SHALL NOT BE LIABLE FOR ANY ERROR, OMISSION, DEFECT, DEFICIENCY, OR NONCONFORMITY IN THE INFORMATION AND WITHOUT LIMITING THE FOREGOING, PHOENIX DOES NOT WARRANT THAT THE INFORMATION (OR THE USE THEREOF) WILL BE FREE OF ALL ERRORS OR THAT IT DOES NOT INFRINGE ANY THIRD PARTY RIGHTS. ANYONE USING THE INFORMATION AGREES TO INDEMNIFY AND HOLD PHOENIX HARMLESS FROM ALL CLAIMS, ACTIONS, COSTS (INCLUDING LEGAL COSTS ON A SOLICITOR AND HIS OWN CLIENT BASIS) AND LIABILITIES ARISING FROM OR IN CONNECTION WITH THE USE OF THE INFORMATION.

3	
7885 11099 2010/12/09 2010/12/12 3.308	9.625 0 5011
2	
7281 7885 2010/12/08 2010/12/08 3.308	9.625 0 5011
1	
5290 7281 2009/07/14 2010/12/07 3.308	9.625 0 5011
BitRun:	Comment:
Start Depth:	
End Depth:	
Start Date:	
End Date:	
Gamma Scale Factor:	
Survey-to-Bit (PTB):	
Gamma-to-Bit (GTB):	
Drill Collar ID/OD:	
Hole Size:	
Casing Size:	
Casing Start Depth:	
Casing End Depth:	
Mud Type 1:	
Mud Weight 1:	
Mud Viscosity 1:	
Mud Type 2:	
Mud Weight 2:	
Mud Viscosity 2:	

BitRun:	Comment:
Start Depth:	
End Depth:	
Start Date:	
End Date:	
Gamma Scale Factor:	
Survey-to-Bit (PTB):	
Gamma-to-Bit (GTB):	
Drill Collar ID/OD:	
Hole Size:	



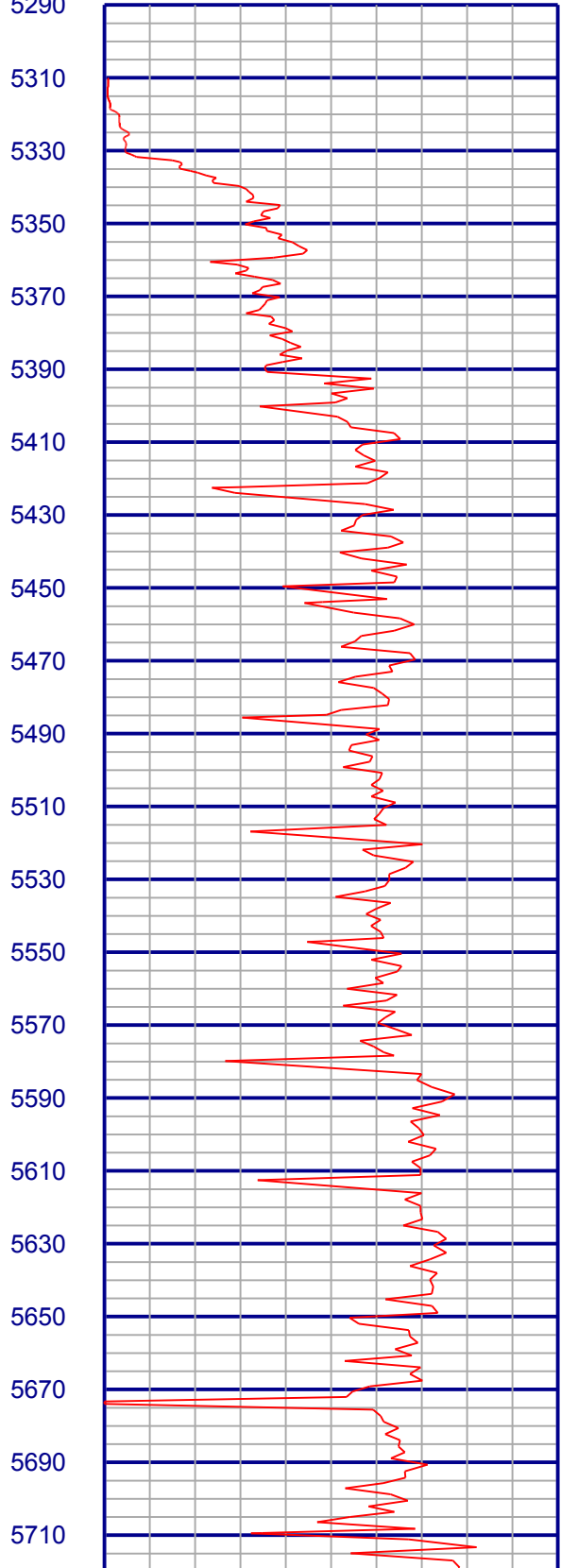
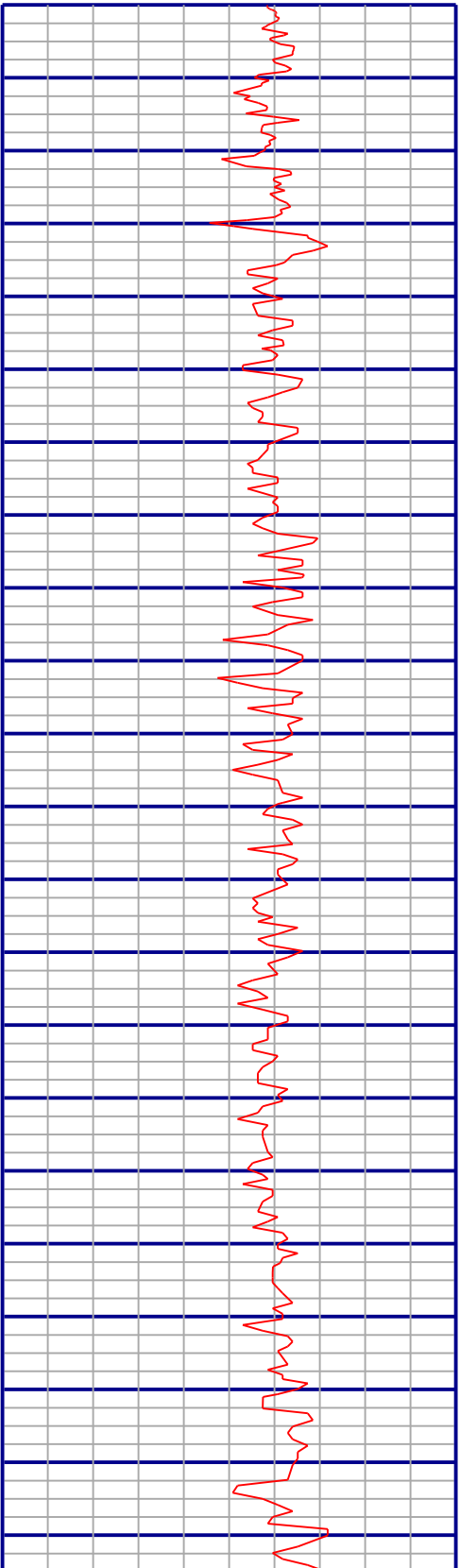
EQT
511458A Sidetrack
Lewis Co

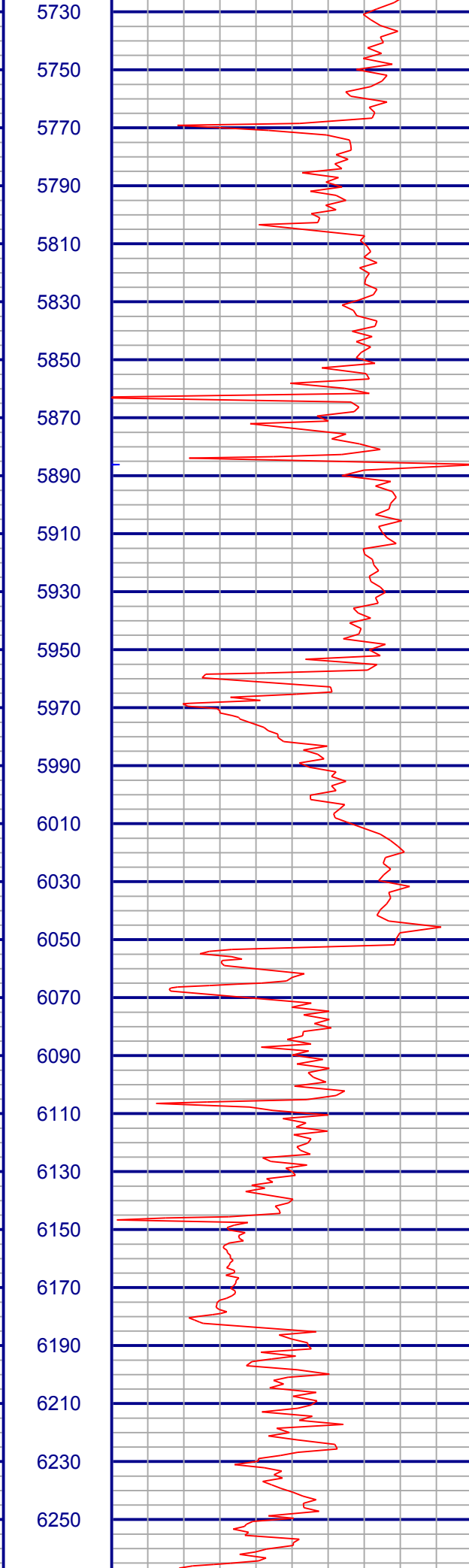
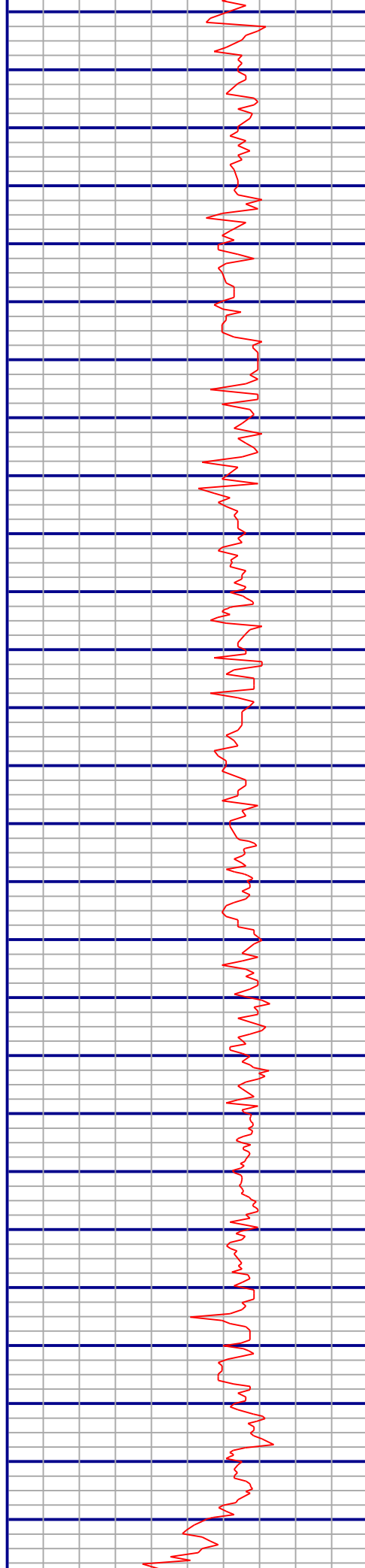
MD
1:600
Feet

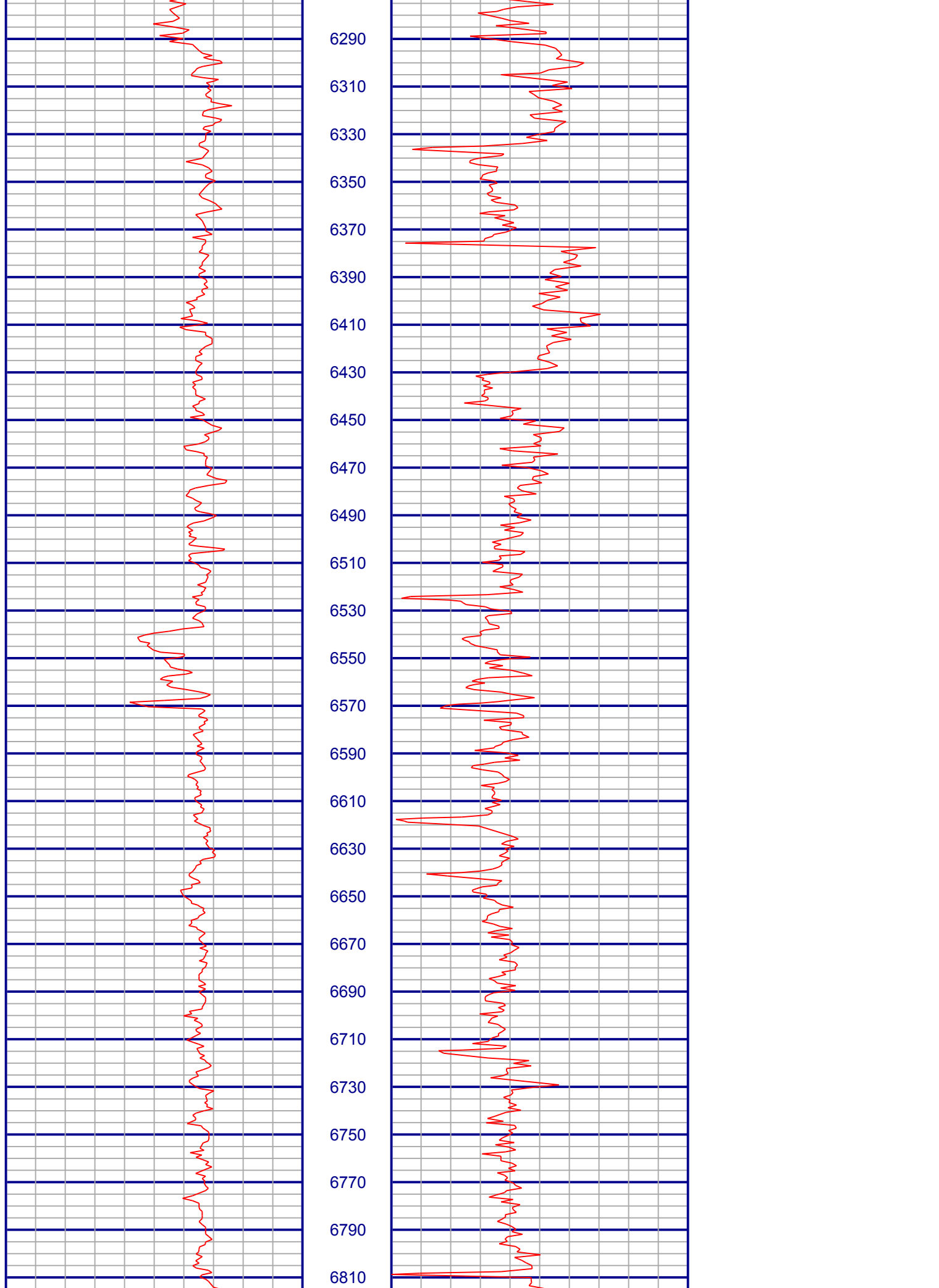
1030698 Sidetrack

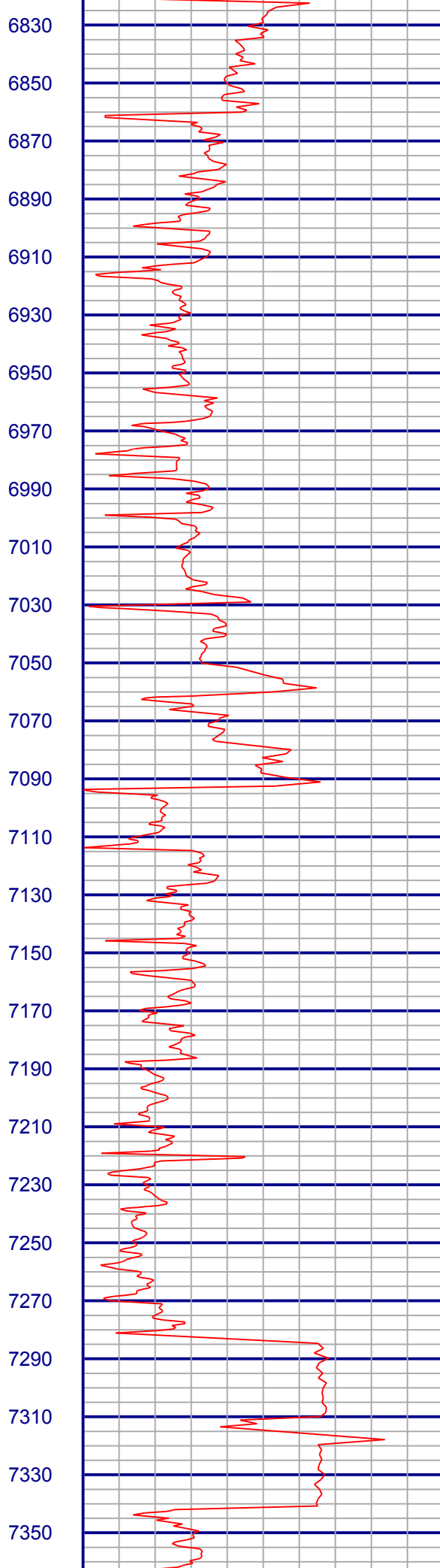
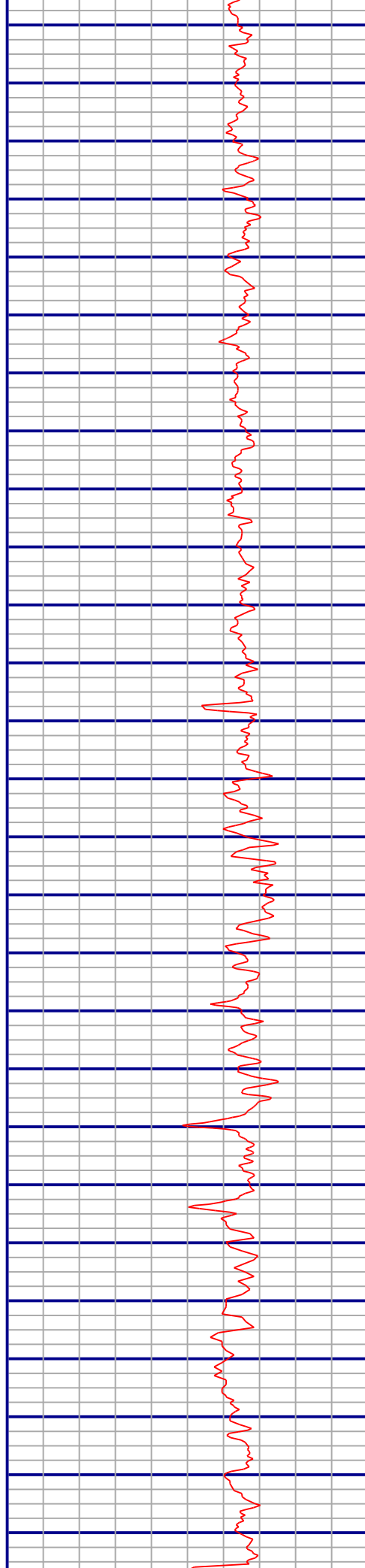
0	Gamma (API)	300
300	Gamma (API)	600
600	Gamma (API)	900

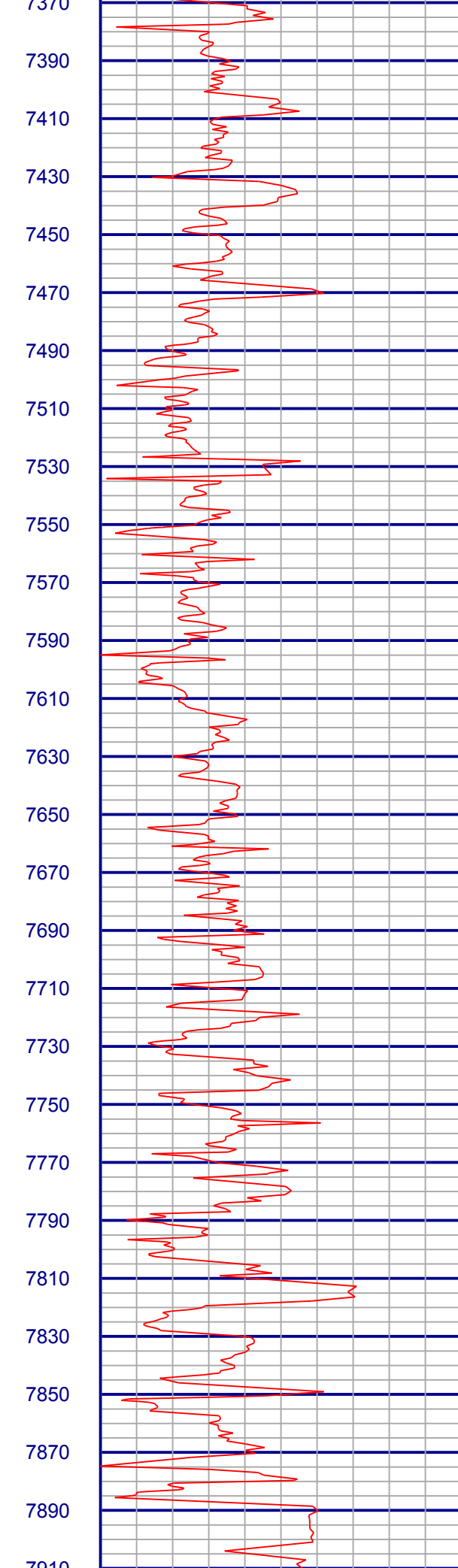
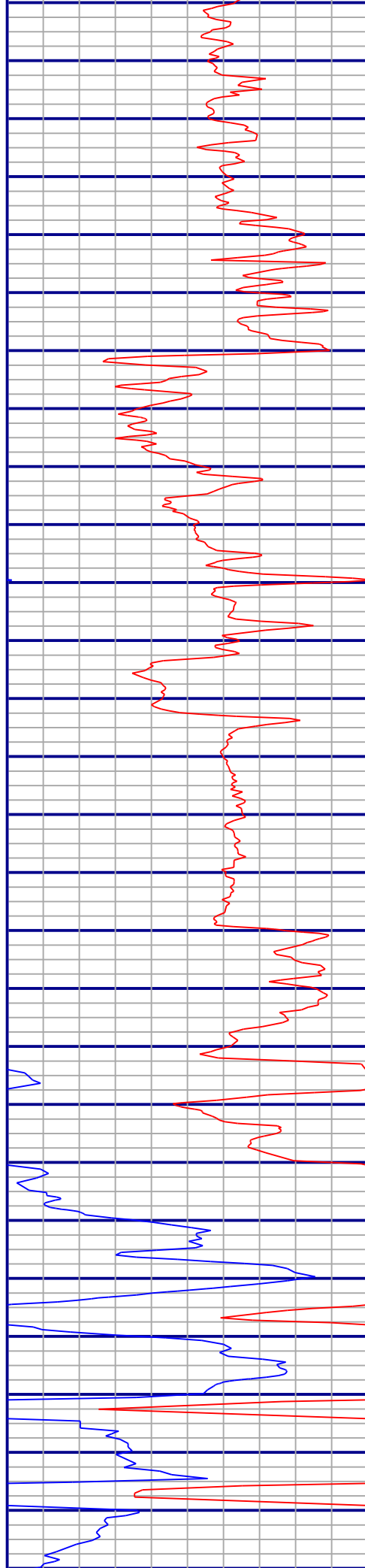
0	ROP (ft/hr)	150
150	ROP (ft/hr)	300

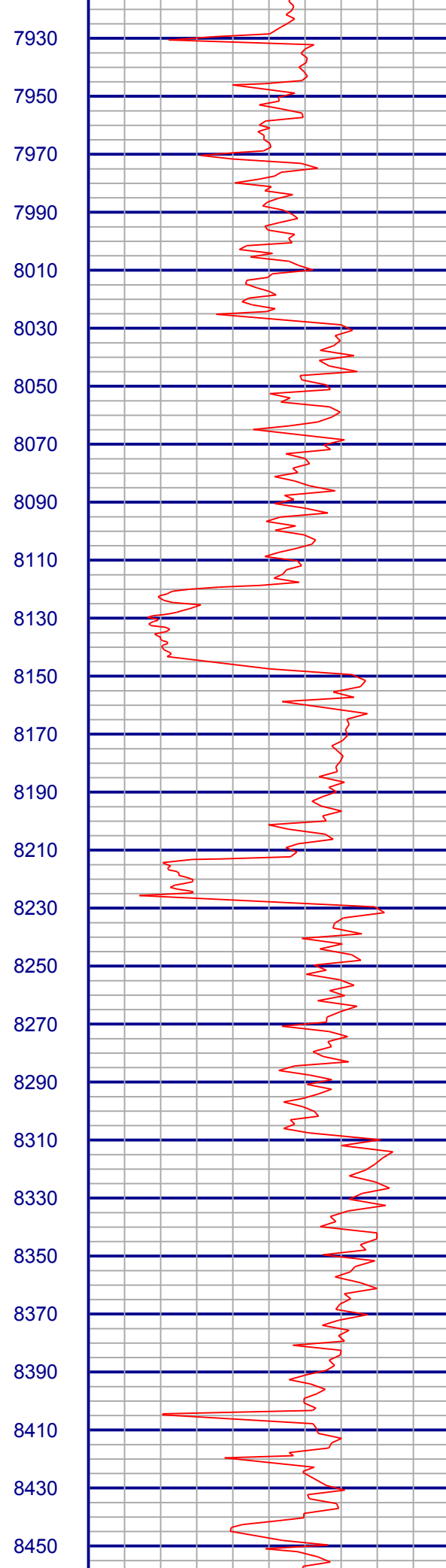
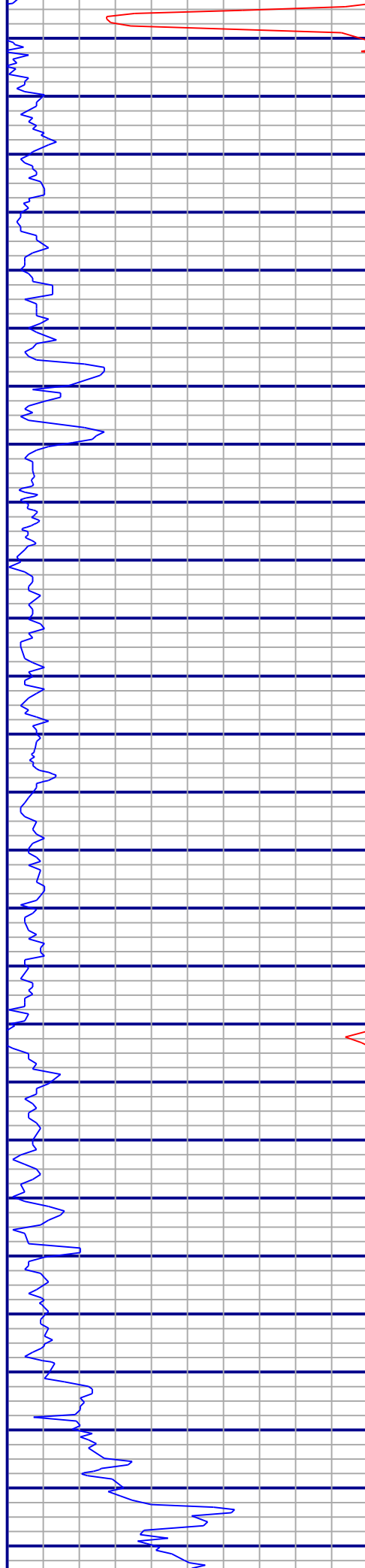


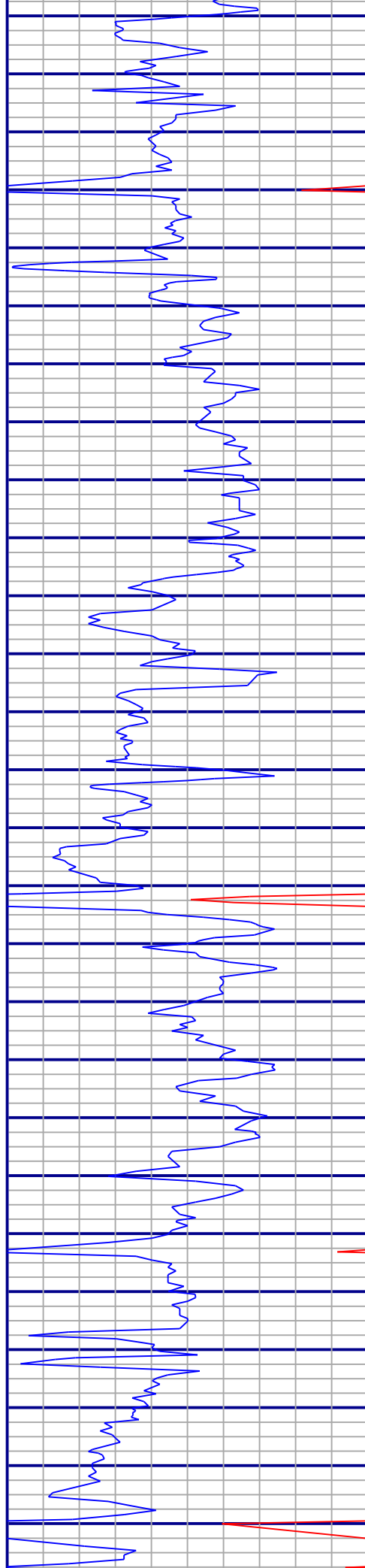












8470
8490
8510
8530
8550
8570
8590
8610
8630
8650
8670
8690
8710
8730
8750
8770
8790
8810
8830
8850
8870
8890
8910
8930
8950
8970
8990

