



Crim 2248 3H TVD

(Scale: 2"=100')

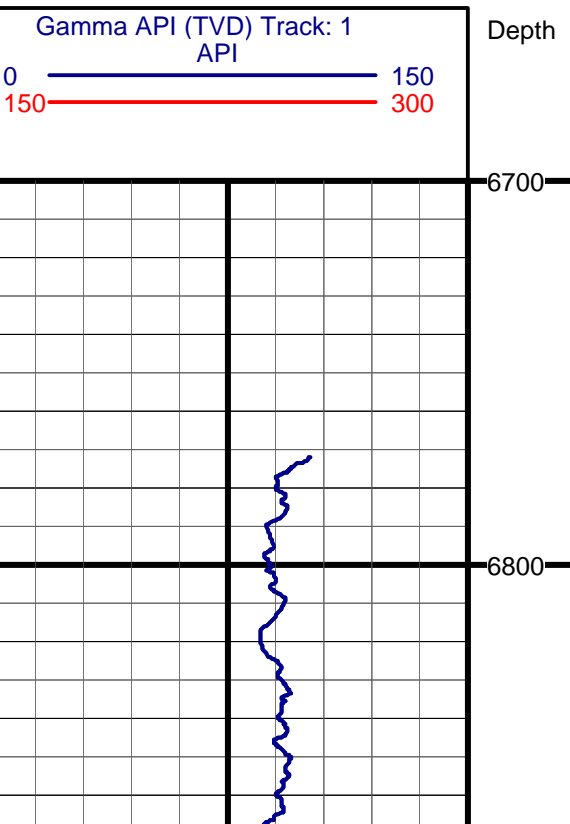
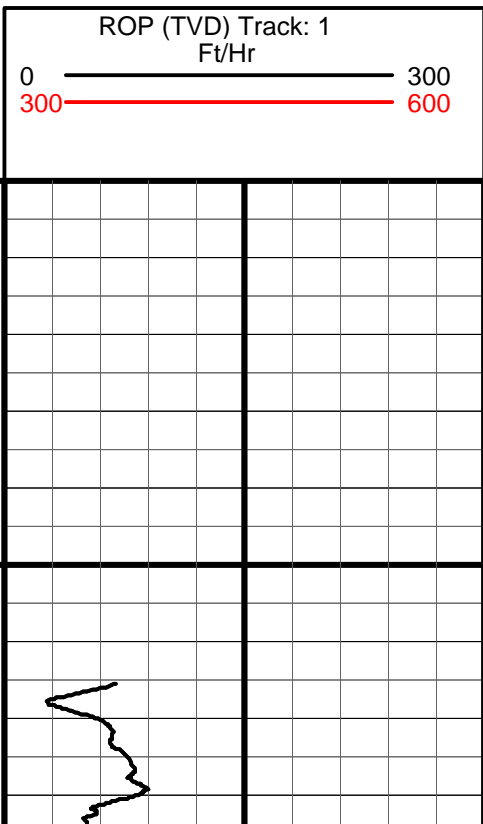
Company: XTO Energy Inc. State: WV
 Well: Crim 2248 3H County: Marion
 Field: Marcellus Country: USA
 Well ID: 47-049-02115
 Job Number: DDPA-100120
 Location: Four States Elev KB: 985'
 Operator 1: B. Holdridge Elev DF: 985'
 Operator 2: J. Blakeny Elev GL: 965'

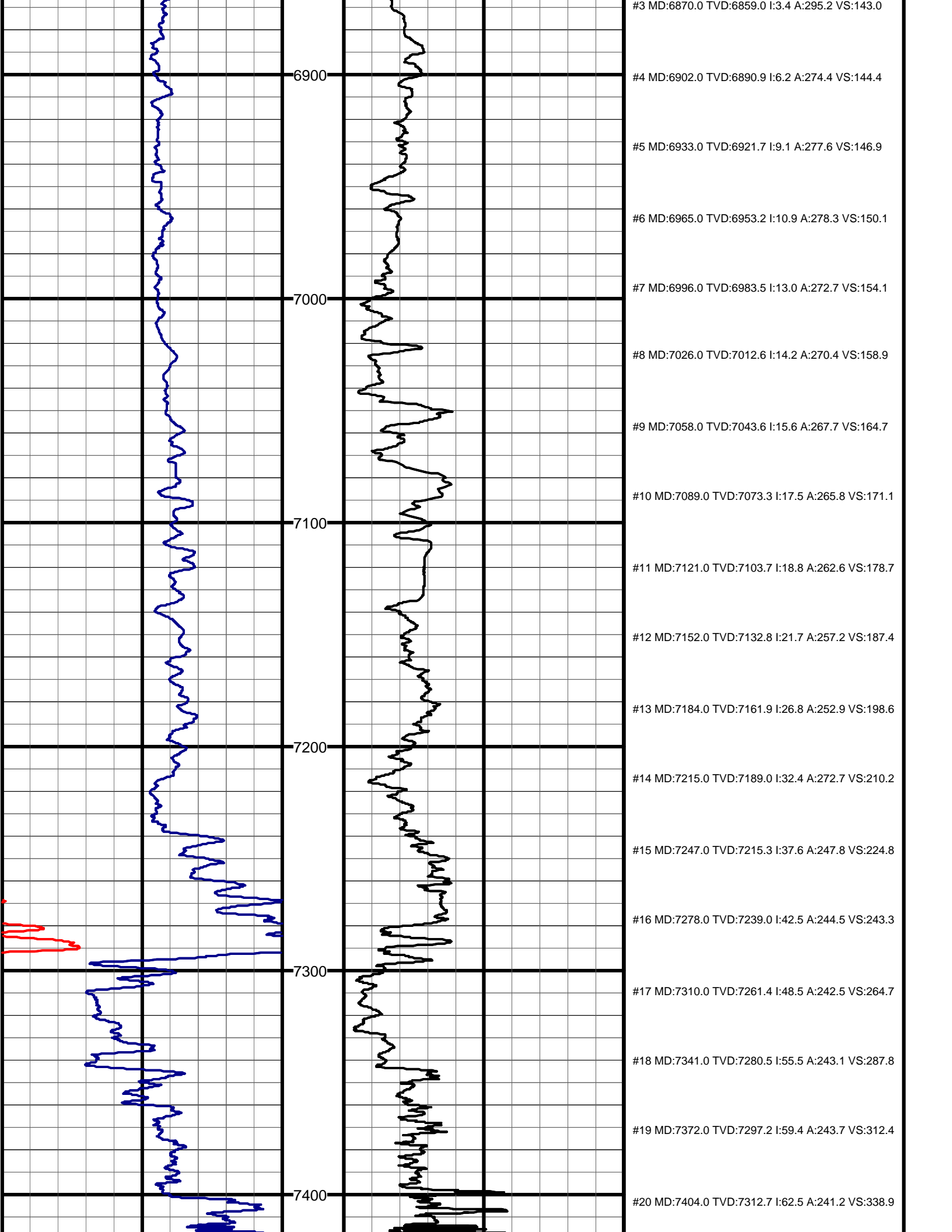
Comment 1: X: 354873.09
 Comment 2: Y: 1773551.42
 Comment 3:
 Comment 4:
 Comment 5:

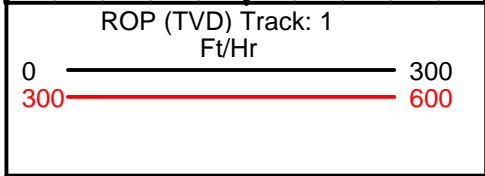
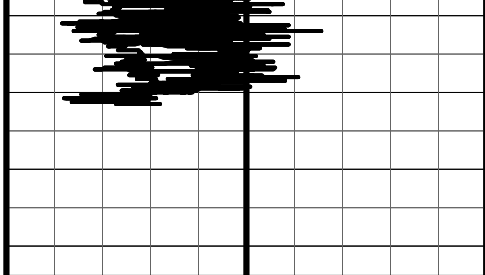
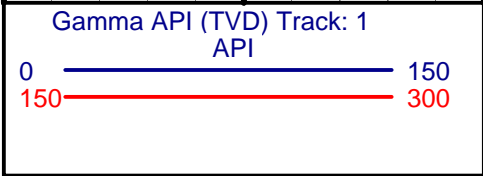
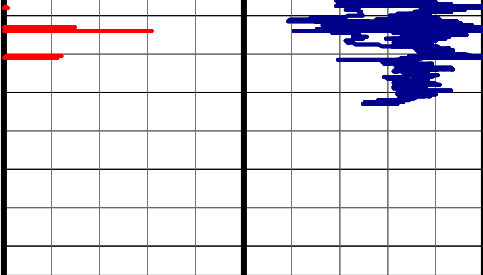
Hole Data			Casing Record		
Size	From	To	Size	From	To
12 1/4"	0'	2910'	13 5/8"	0'	2910'
8 3/4"	2910'	11070'	9 5/8"	2910'	11070'

Tool Run Data		Run #1	Run #2	Run #3	Run #4	Run #5
Tool S/N	133	133	133	169		
Cal Factor	4.06	4.06	4.06	4.06		
Gamma Offset	59'	63'	59'	63'		
Start Depth	6840'	7049'	7154'	7336'		
Start Date	8/21/10	8/23/10	8/24/10	8/24/10		
Start Time	02:00	04:00	02:00	22:00		
End Depth	7049'	7154'	7336'	11070'		
End Date	8/23/10	8/24/10	8/24/10	7/29/10		
End Time	02:00	02:00	20:00	08:00		

#1 MD:6806.0 TVD:6795.1 I:2.9 A:315.2 VS:142.7
#2 MD:6838.0 TVD:6827.1 I:3.0 A:313.0 VS:142.7







Depth

#21 MD:7436.0 TVD:7327.1 I:64.1 A:240.3 VS:366.2

#22 MD:7467.0 TVD:7340.5 I:64.7 A:239.5 VS:393.1

