



NZone Guidance
 Nzone Guidance
 3101 N. HWY 183
 Liberty Hill, TX 78642

Heaven Hill 2-07 HU
Scale 1":100' - MD
3/30/2018 11:55 PM

Oper. Company: Tug Hill Operating
Well: Heaven Hill 2-07 HU
Field: Utica
Rig: Nabors X08
Well ID: 47-051-01911
Job Number: THO-18-1058

State: West Virginia
County: Marshall
Country: USA
Location: Moundsville
Start Date: 03/13/2018 16:00:20
End Date:









Latitude: 38.81003950
Longitude: -80.71292210

Elev GL: 1331
Elev DF: 33
Elev KB: 1364

Operator 1: Bob Wolfe

Operator 2: Stephen Hiser

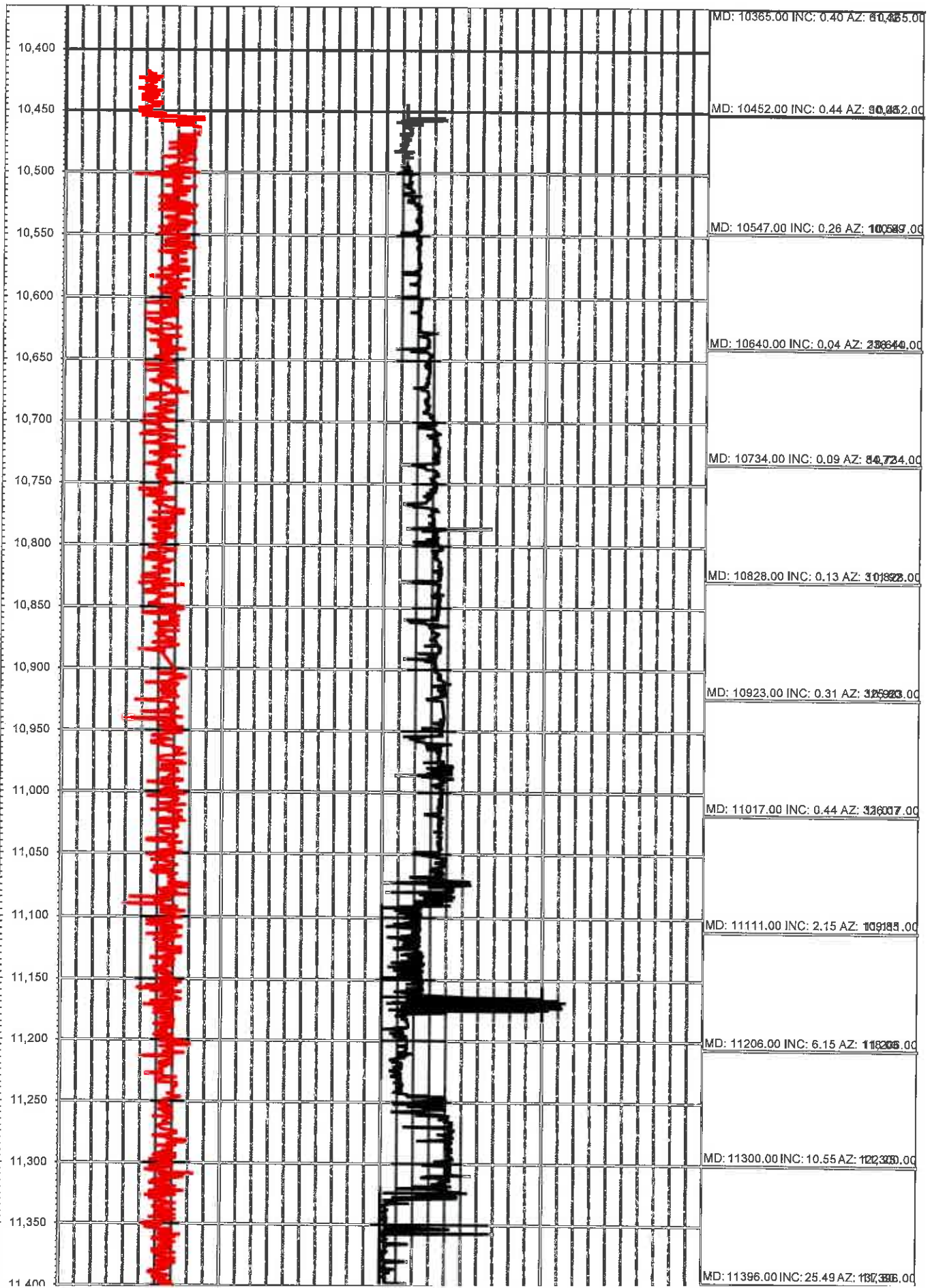
Hole Data			Casing Data		
Size	From	To	Size	From	To
26"	0.00	1200.00	20"	0.00	1160.00
17 1/2"	1160.00	2900.00	13 5/8"	0.00	2871.00
12 1/4"	2871.00	10400.00	9 5/8"	0.00	10345.00
8 1/2"	10400.00	0.00			

BHA Data			
Picture	Type	Length	Description
	Bit	1	8.5" SDI611
	Motor	27	2.38* Nzone Motor 7/8 5.0 Stg
	Sub2	3.38	UBHO Sub
	Sub2	31.02	Flex Monel
	Sub2	30.18	Flex Monel
	Sub2	31.02	Flex Monel
	Sub2	8610.56	Rig Drill Pipe
	Sub2	635.3	Rig Heavyweight Drill Pipe

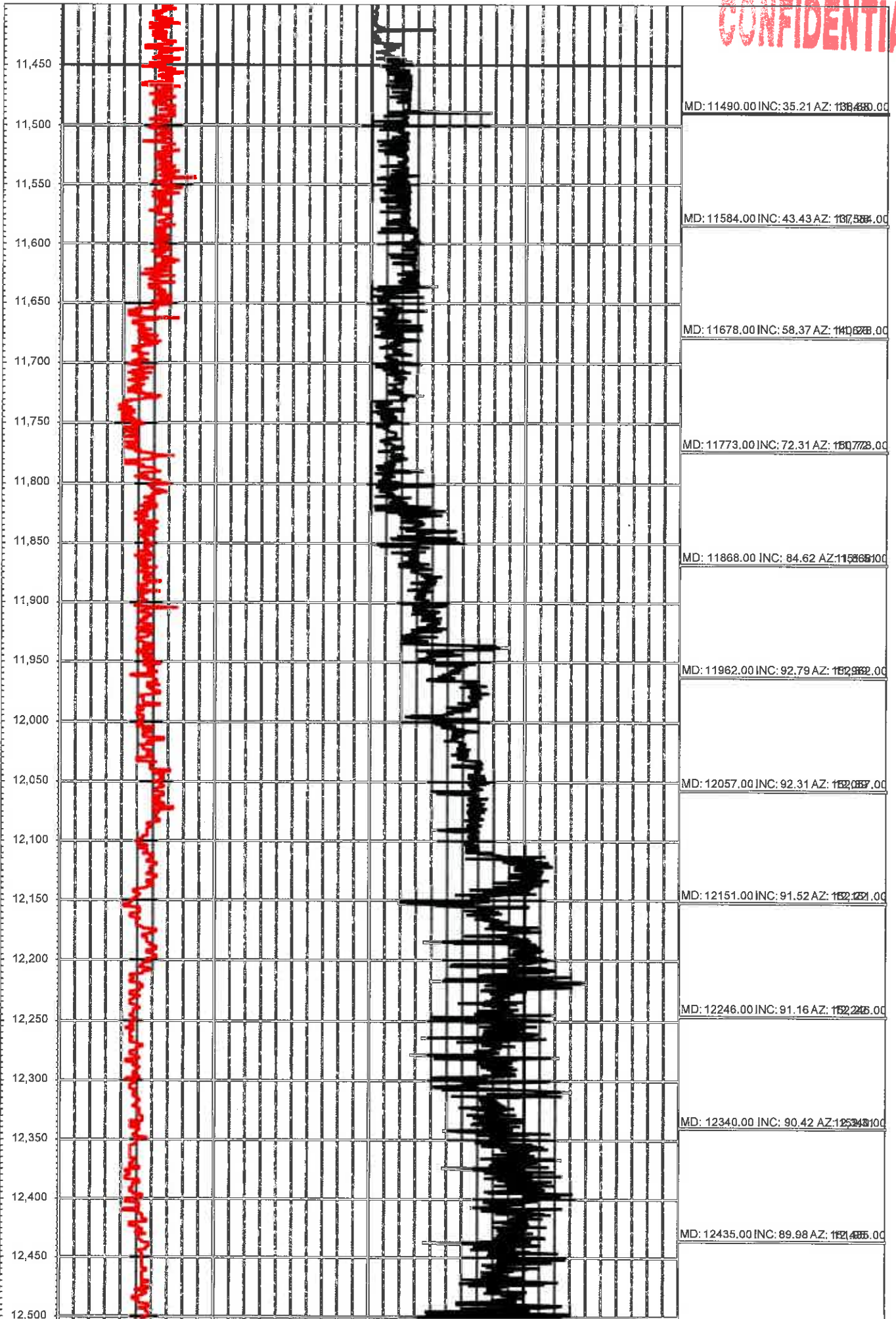
All interpretations are opinions based on inferences from electrical or other measurements and we cannot and do not guarantee the accuracy or correctness of any interpretation, and we shall not except in the case of gross or willful negligence on our part, be liable or responsible for any loss, cost damages or expenses incurred or sustained by anyone resulting from an interpretation made by any of our officers, agents, or employees.

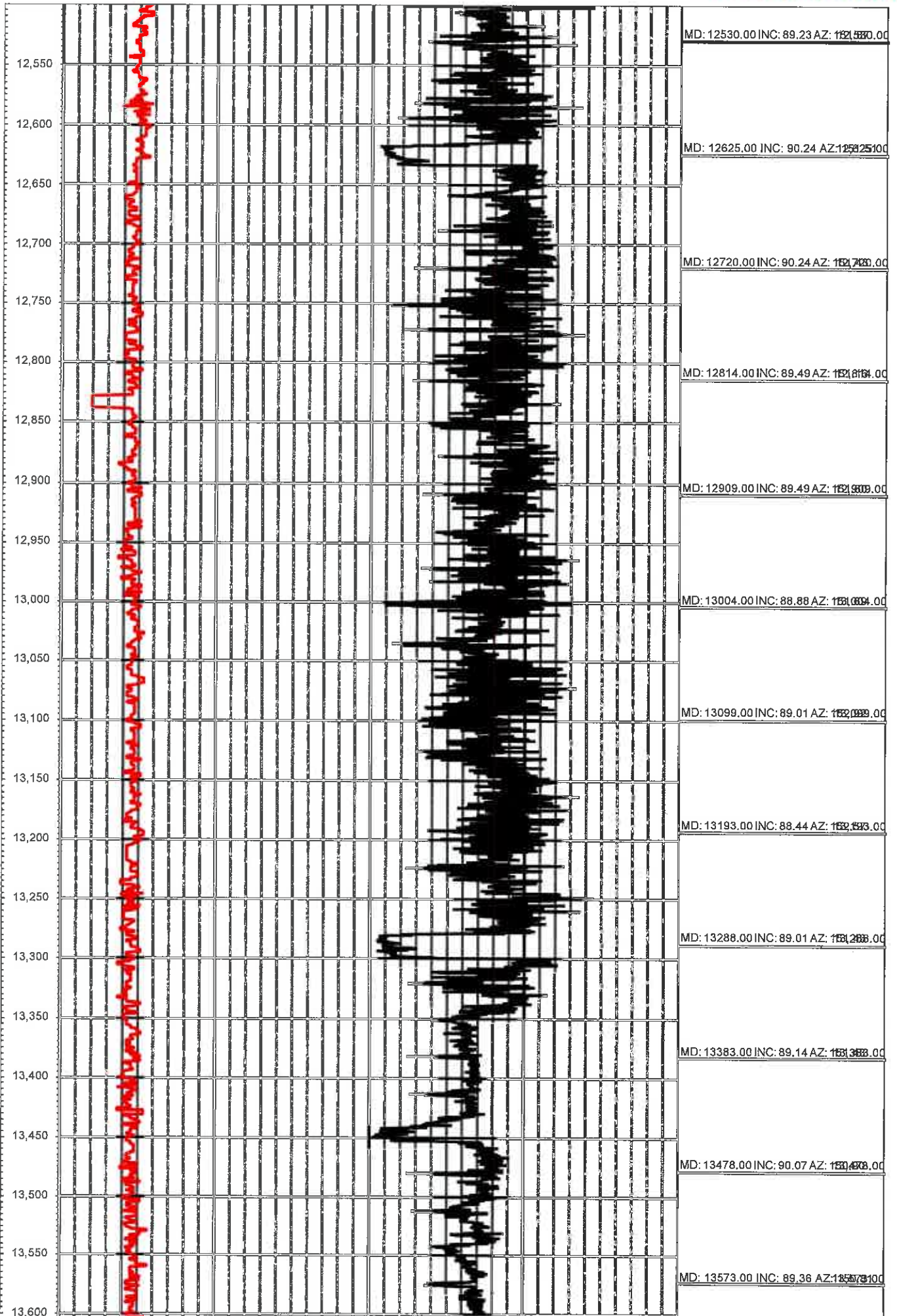
CONFIDENTIAL

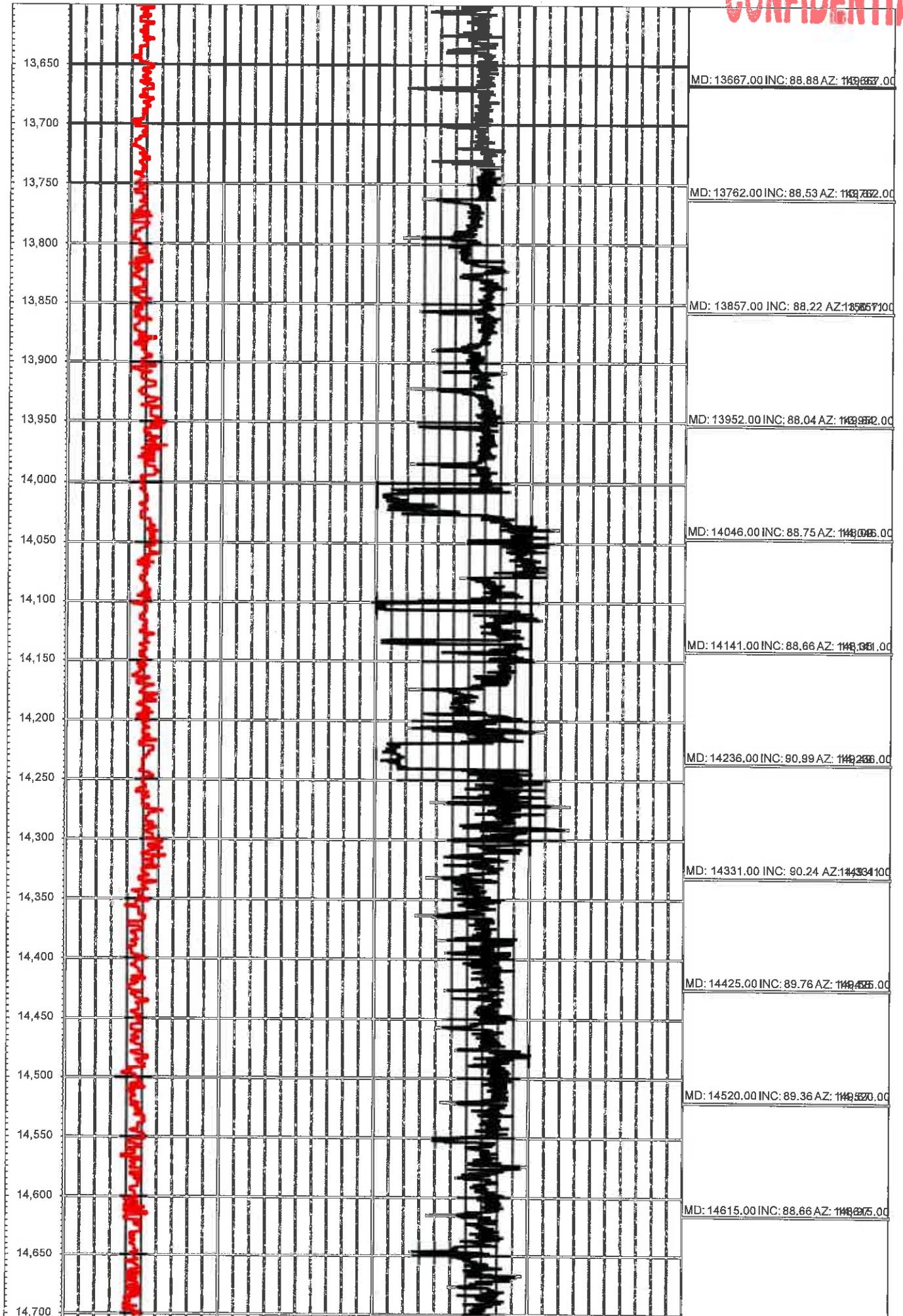
MD 0.00 GR(API) 350.00 0.00 ROP(F/H) 400.00 Surveys (MD/INC/AZ)

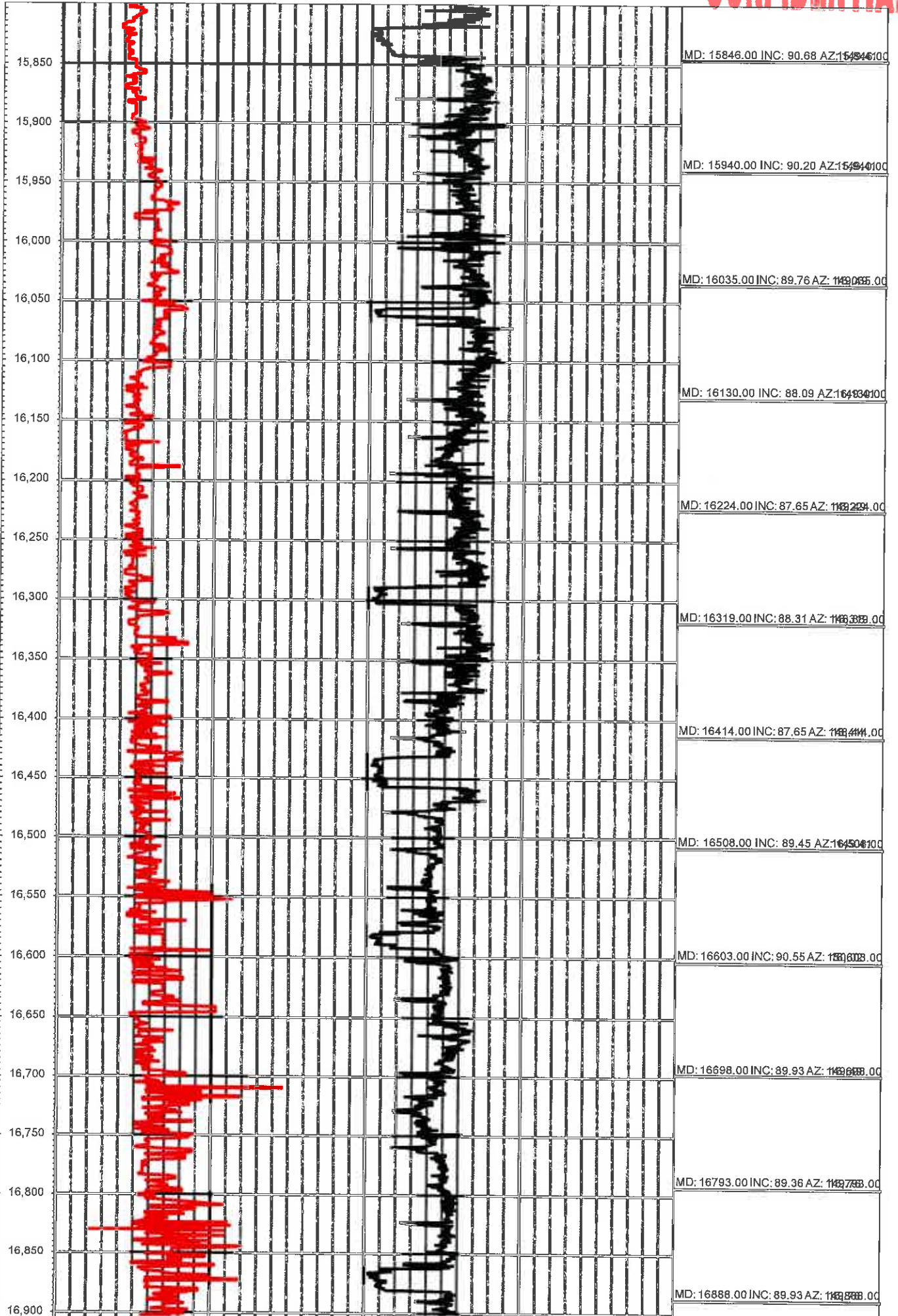


CONFIDENTIAL

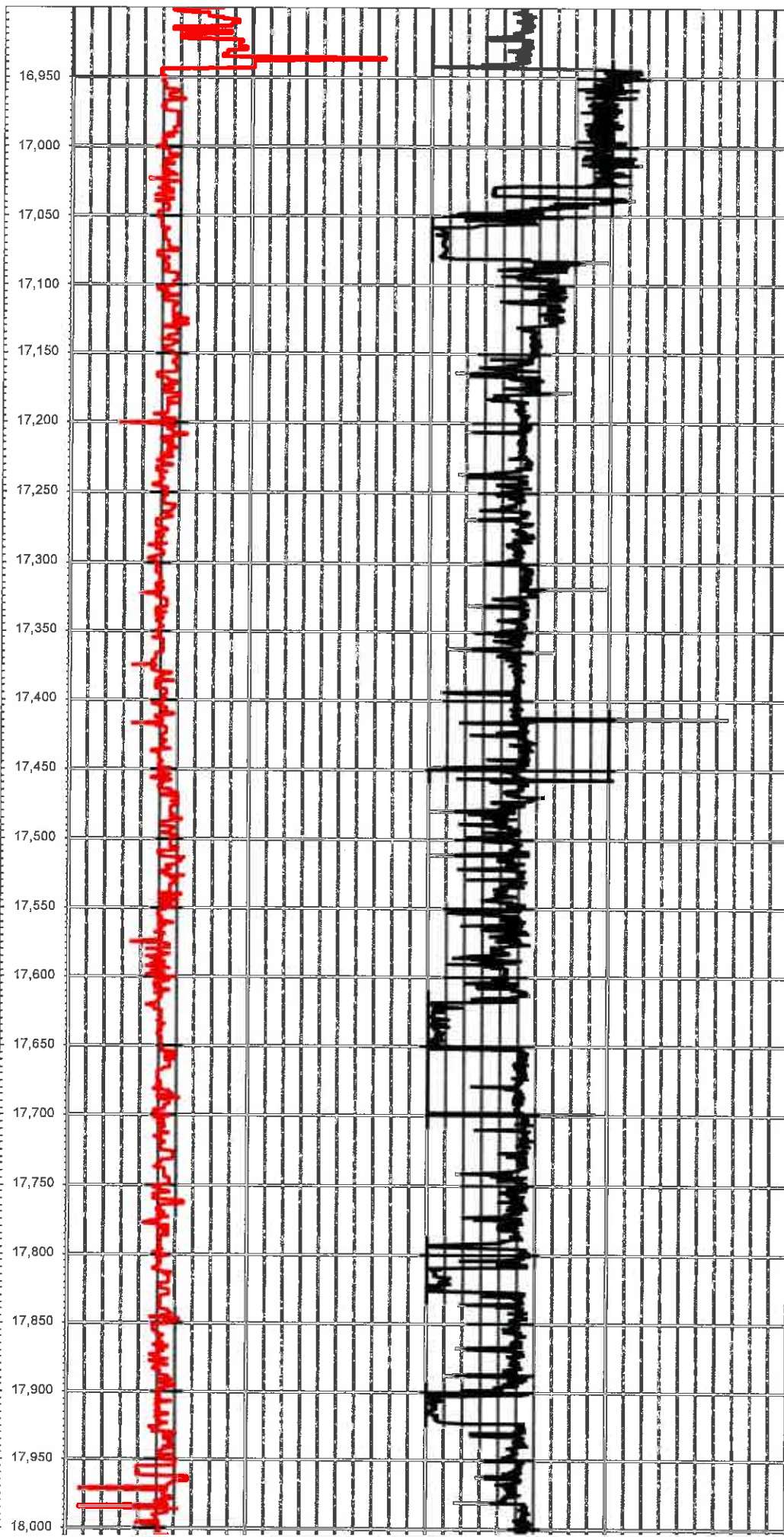








CONFIDENTIAL



MD: 16983.00 INC: 89.23 AZ: 149988.00

MD: 17078.00 INC: 90.59 AZ: 149078.00

MD: 17172.00 INC: 90.15 AZ: 149102.00

MD: 17267.00 INC: 89.85 AZ: 149267.00

MD: 17362.00 INC: 89.14 AZ: 149362.00

MD: 17457.00 INC: 88.88 AZ: 149457.00

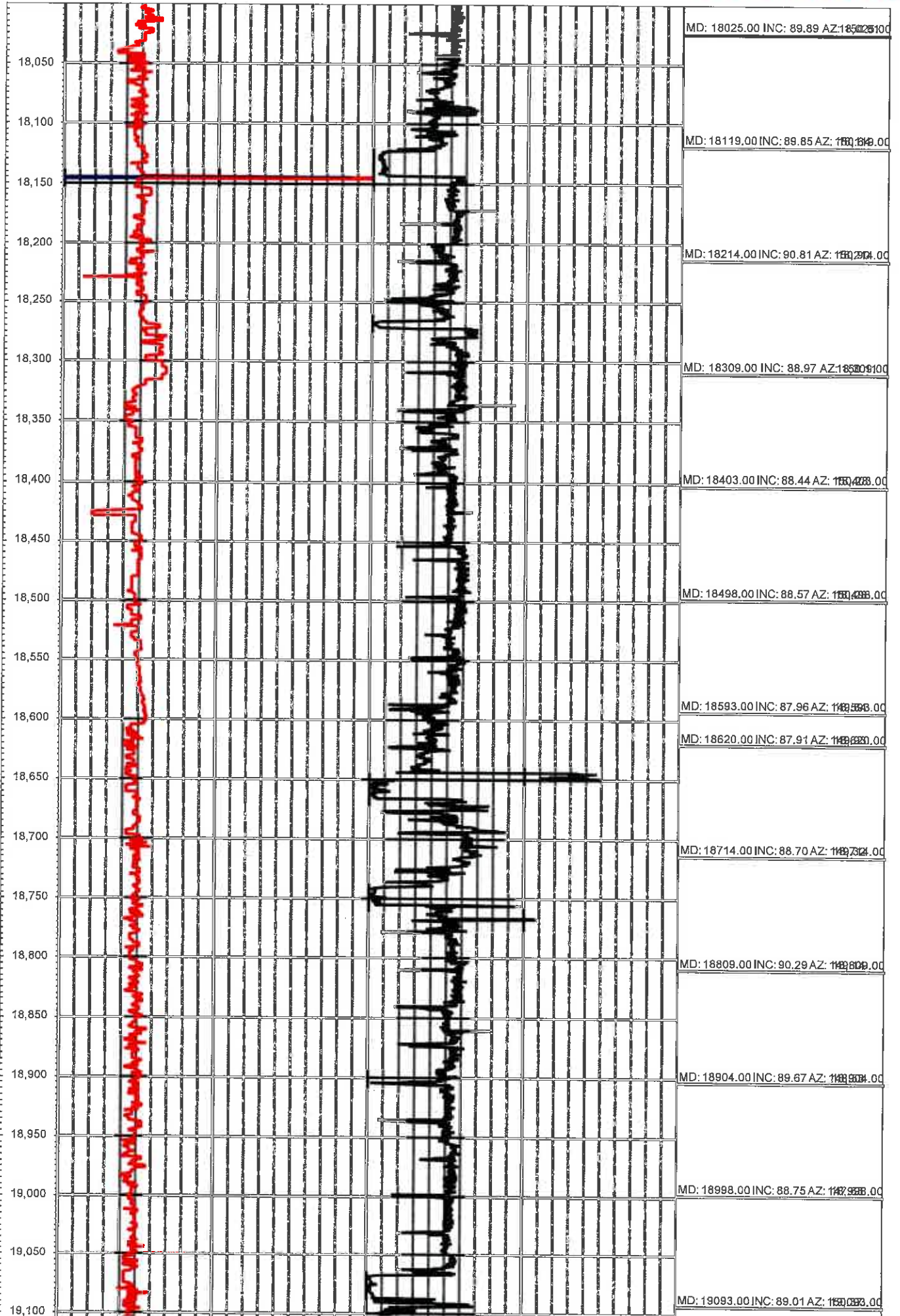
MD: 17551.00 INC: 88.22 AZ: 149551.00

MD: 17646.00 INC: 90.02 AZ: 149646.00

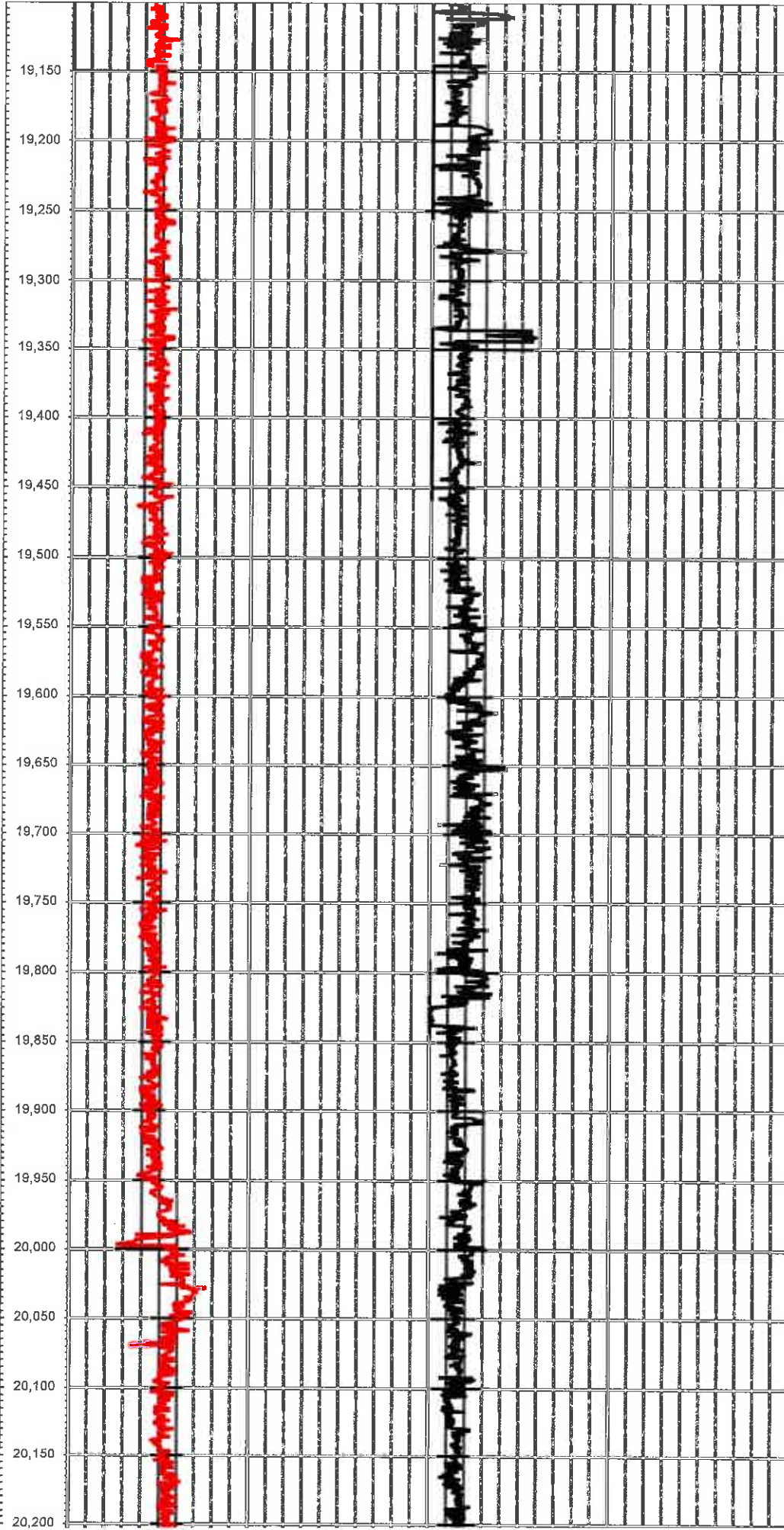
MD: 17740.00 INC: 89.32 AZ: 149740.00

MD: 17835.00 INC: 89.36 AZ: 149835.00

MD: 17930.00 INC: 90.51 AZ: 149930.00



CONFIDENTIAL



MD: 19188.00 INC: 89.23 AZ: 189,488.00

MD: 19282.00 INC: 89.23 AZ: 189,282.00

MD: 19377.00 INC: 89.23 AZ: 189,377.00

MD: 19471.00 INC: 89.19 AZ: 189,469.00

MD: 19566.00 INC: 89.27 AZ: 189,566.00

MD: 19661.00 INC: 88.88 AZ: 189,661.00

MD: 19756.00 INC: 88.31 AZ: 189,756.00

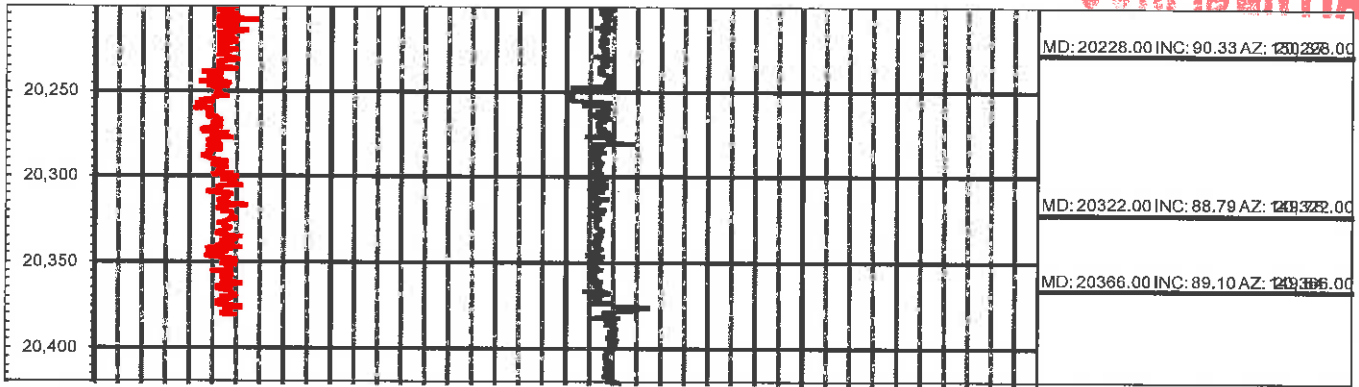
MD: 19850.00 INC: 89.54 AZ: 189,850.00

MD: 19945.00 INC: 89.98 AZ: 189,945.00

MD: 20039.00 INC: 90.07 AZ: 190,039.00

MD: 20133.00 INC: 90.20 AZ: 190,133.00

CONFIDENTIAL



MD 0.00 OR(API) 358.00 0.00 500(FTH) 499.00 Surveys (MD/INC/AZ)
FY 358.00 288.00